

Three Steps to Start Logging

EasyLog Data Loggers



DOWNLOAD SOFTWARE NOW FROM WWW.EASYLOGUSB.COM



2

THEN INSTALL YOUR SOFTWARE & USB DRIVER

Windows™ 2000/XP/VISTA/7

EL-WIN-USB Windows Control Software

EL-WIN-USB is the software platform for Lascar's standalone USB data loggers. It is compatible with 32-bit and 64-bit versions of Windows XP, Vista and 7.

The latest build of the software includes a major revision which incorporates an updated user interface, support for graphing of event data and the ability to graph the larger data sets that will be produced by forthcoming product launches.

What's New in EL-WIN-USB

Installing EL-WIN-USB on Windows

Begin Software Download

1. Visit www.easylogusb.com
2. Click the 'Begin Software Download' link.
3. When prompted choose 'Save'
4. Select a location to save the zip file to and click 'Save'
5. When the download is complete, open the zip file.
6. Select 'setup.exe' to begin installation.

3

YOUR DATA LOGGER IS READY FOR USE

- Ensure the battery is correctly installed.
- Insert the data logger into an available USB port on your PC.
- Double click on the EasyLog USB icon on your Windows™ desktop. This will load the configuration software. Setup the data logger for a new log, download a data logger that has been recording, view previously saved data in graph format and check the current status of the attached data logger (including the serial number).
- When setup is complete, the data logger should be removed from the USB port to begin recording. If you would like advice on how best to use the data logger for a particular application, please contact your nearest Lascar representative.



EL-USB-TC-LCD, EL-USB-TP-LCD

Before using the data logger you will need to insert the 3.6V 1/2AA battery provided, following the instructions below. Replacement batteries available from www.lascarelectronics.com, PN: BAT 3V6 1/2AA.



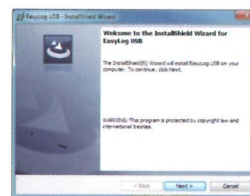
EL-USB-1 PRO

Insert the 3.6V 2/3AA High Temperature battery provided, following the instructions below. Replacement batteries available from www.lascarelectronics.com, PN: BAT 3V6 2/3AA H TEMP.

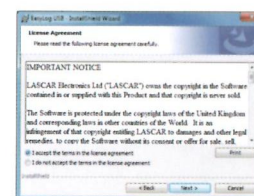


EL-USB-1-RCG BATTERY IS PREINSTALLED

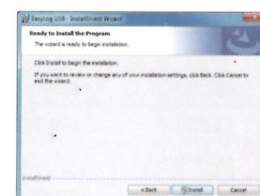
To charge the battery connect to USB port until green LED shows.



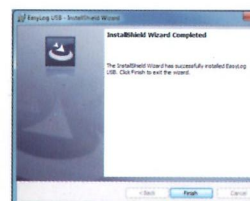
7. This will open the 'EasyLog USB - InstallShield Wizard'. click 'Next'.



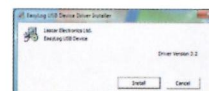
8. Please read the license agreement. To continue with the installation choose 'I accept the terms in the license agreement' and then click 'Next'.



9. Next click "Install" to begin installation



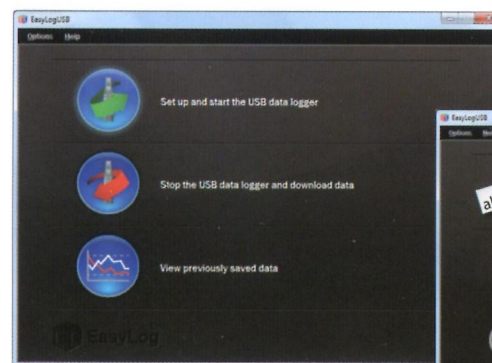
10. Click 'Finish' to exit the application install wizard.



11. You will be presented with the 'EasyLog USB Device Driver Installer'. Click 'Install'



12. When presented with the message 'Installation completed successfully, click 'OK'.



▪ Set-up, stop or view previously saved data

Part No	Function	Range	Accuracy (overall error) Typ.	Max.	Readings	Battery	Battery Life*
EL-USB-1	Temperature	-35 to +80 °C (-31 to +176 °F)	±1°C (±2°F)		16,382	3.6V ½AA	1 year
EL-USB-1-LCD	Temperature with LCD	-35 to +80 °C (-31 to +176 °F)	±0.5°C (±1°F)	±1.5°C (±3°F)	16,382	3.6V ½AA	1 year
EL-USB-1-PRO	Extended Temperature	-40 to +125 °C (-40 to +257 °F)	±0.2°C (±0.4°F)		32,510	3.6V ¾AA	3 years
EL-USB-1-RCG	Temperature with rechargeable battery	-20 to +60 °C (-4 to +140 °F)	±1°C (±2°F)		32,510	Lithium Ion	1 month (rechargeable)
EL-USB-2	Temperature, Humidity & Dew Point	-35 to +80 °C (-31 to +176 °F) 0 to 100%RH	±0.5°C (±1°F) ±3%RH	±2°C (±4°F) ±6.0%RH	16,382 16,382	3.6V ½AA	1 year
EL-USB-2+	Increased Accuracy Temperature, Humidity & Dew Point	-35 to +80 °C (-31 to +176 °F) 0 to 100%RH	±0.3°C (±0.6°F) ±2.0%RH	±1.5°C (±3°F) ±4.0%RH	16,382 16,382	3.6V ½AA	1 year
EL-USB-2-LCD	Temperature, Humidity and Dew Point with LCD	-35 to +80 °C (-31 to +176 °F) 0 to 100%RH	±0.5°C (±1°F) ±3.0%RH	±2°C (±4°F) ±6.0%RH	16,382 16,382	3.6V ½AA	1 year
EL-USB-2-LCD+	Increased Accuracy Temperature, Humidity and Dew Point with LCD	-35 to +80 °C (-31 to +176 °F) 0 to 100%RH	±0.3°C (±0.6°F) ±2.0%RH	±1.5°C (±3°F) ±4.0%RH	16,382 16,382	3.6V ½AA	1 year
EL-USB-3	Voltage	0 to 30V d.c.	±1%		32,510	3.6V ½AA	1 year
EL-USB-4	Current Loop	4 to 20mA	±1%		32,510	3.6V ½AA	1 year
EL-USB-5	Counter, Event & State	N/A		±3 secs/24 hrs	32,510	3.6V ½AA	1 year
EL-USB-CO	Carbon Monoxide	0 to 1000ppm NOT A LIFE SAVING DEVICE	±6ppm		32,510	3.6V ½AA	3 months
EL-USB-CO300	Carbon Monoxide	0 to 300ppm NOT A LIFE SAVING DEVICE	±4ppm		32,510	3.6V ½AA	3 months
EL-USB-TC	Thermocouple (J, K and T-type) K-type probe included	-200 to +1350°C (-328 to +2462°F) (K-type) -200 to +1190°C (-328 to +2174°F) (J-type) -200 to +390°C (-328 to +734°F) (T-type)	±1°C (±2°F)	±2°C (±4°F)	32,510	3.6V ½AA	6 months
EL-USB-TC-LCD	Thermocouple with LCD (J, K and T-type) K-type probe included	-200 to +1350°C (-328 to +2462°F) (K-type) -200 to +1190°C (-328 to +2174°F) (J-type) -200 to +390°C (-328 to +734°F) (T-type)	±1°C (±2°F)	±2°C (±4°F)	32,510	3.6V ½AA	6 months
EL-USB-TP-LCD	External Thermistor Probe	-40 to +125 °C (-40 to +257 °F)	±0.1°C (±0.2°F)		32,510	3.6V ½AA	6 months

*Depending on logging rate, ambient temperature, and use of alarm LED

LED FLASHING MODES

EL-USB-1	EL-USB-2, EL-USB-2+, EL-USB-2-LCD EL-USB-2-LCD+	EL-USB-1-LCD, EL-USB-1-RCG, EL-USB-3, EL-USB-4, EL-USB-TC, EL-USB-TC-LCD & EL-USB-TP-LCD
Green double flash Delayed start Red double flash High alarm Orange double/single flash Memory full Green single flash Logging, no alarm Red single flash Low alarm Orange single flash every 60 sec Low battery No LEDs flash Logger stopped or battery empty	Green triple flash Logger full, no alarm on the channel Red triple flash Logger full, alarm on the channel Green double flash Delayed start Green single flash Logging, no alarm Red single flash Logging, low alarm on the channel Red double flash Logging, high alarm on the channel No LEDs flash Logger stopped or battery empty Dual Red Flash Battery low	Green double flash Every 20 seconds: logger full, no alarm Green single flash Every 30 seconds: delayed start Every 20 seconds: low battery, logging, no alarm Every 10 seconds: logging, no alarm Red/Green single flash Every 20 seconds: logger full, last value equal to or exceeds the low or high alarm Red double flash Every 10 seconds: logging, high alarm Every 20 seconds: logging, high alarm, low battery Red single flash Every 10 seconds: logging, low alarm Every 20 seconds: logging, low alarm, low battery No LEDs flash LEDs disabled during configuration to save battery power and increase logging life / logger stopped / battery empty
EL-USB-5 Green single flash Every 10 seconds: normal logging Green single flash	Green double flash Every 20 seconds: memory full Red single flash	

LCD INDICATORS (EL-USB-1-LCD, EL-USB-2-LCD, EL-USB-2-LCD+, EL-USB-TC-LCD AND EL-USB-TP-LCD ONLY)

DISPLAY AND STATUS FUNCTIONS	LCD INDICATION		
EL-USB-1-LCD, EL-USB-2-LCD & EL-USB-2-LCD+	Display	Logger Status	Explanation
	d5	Delayed Start	This is shown when the logger is set to start at a specific data and time*
	P5	Push to Start	This is shown when the logger is setup for "Push to start" logging
*EL-USB-2-LCD & EL-USB-2-LCD+ only	log	Logging	This is shown when the logger is running in "LCD off" mode, and the button is pressed. The display clears again after three seconds
EL-USB-TC-LCD	---	Stopped	If the logger has not been set to log and the button is pressed, three dashes are displayed for three seconds
			* If the logger is set to "LCD off" or "LCD on for 30 seconds" mode, then this will only be shown after the button is pressed. Otherwise the display will remain blank.